

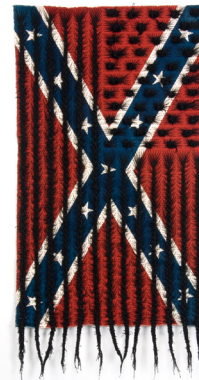
Fusion: Art of the 21st Century
 December 19, 2014 - July 26, 2015



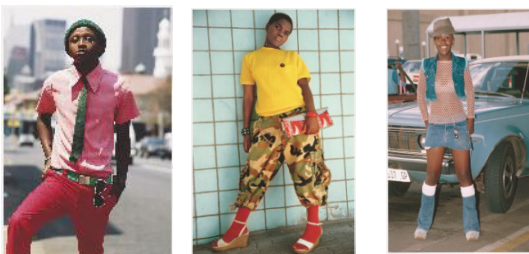
Radcliffe Bailey (American, born 1968), *Vessel*, 2012, tarp, thread, iron, vintage model ship, African sculpture, wicker basket, and glass, ca 120 x 188 x 89". Pamela K. and William A. Royall, Jr. Fund for 21st-Century Art and National Endowment for the Arts Endowment Fund, 2014.5



Trenton Doyle Hancock, *The Former and the Ladder or Ascension and a Cinchin'*, 2012, acrylic and mixed media on canvas. Sydney and Frances Lewis Endowment Fund and Pamela K. and William A. Royall, Jr., Fund for 21st-Century Art, with funds contributed by Mary and Don Shockey, Jr., and Marion Boulton Stroud, 2013.3



Sonya Clark (American, born 1967), *Black Hair Flag*, 2010, paint, canvas, thread. Promised Gift of Pamela K. and William A. Royall, Jr.



Nontsikelelo Veleko (South African, born 1977), From the series *Beauty is in the eye of the beholder: Nontsikelelo*, 2003, 10 from an edition of 10; *Phumeza*, 2004, 4 from an edition of 10; *Kepi I*, 2003/2006, 7 from an edition of 10. Pigment inks on cotton rag paper. Kathleen Boone Samuels Memorial Fund with additional funds provided by Ivan Jecklin and Allison Weinstein, 2011.212, .213, .211.



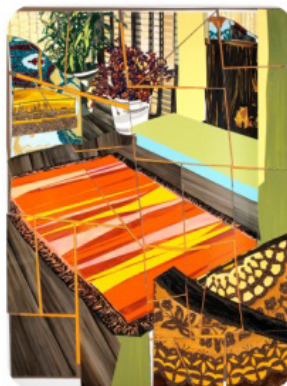
Los Carpinteros (Cuban, collective, founded in 1991), *Cargo Grande*, 2004, watercolor on paper. Lent by Pamela K. and William A. Royall, Jr.



Wendell Castle (American, born 1932), *Blue Noon*, 2007, polychromed fiberglass, unique prototype for an edition of 8. Gift of the artist and Friedman Benda, 2013.212



Sally Mann (American, born 1951), *Untitled #9, Antietam*, 2001, gelatin silver enlargement print. National Endowment for the Arts Fund for American Art, 2004.18



Mickalene Thomas (American, born 1971), *Interior: Two Chairs and a Fireplace*, 2011, acrylic and oil enamel with rhinestones on panel. Lent by Pamela K. and William A. Royall, Jr.



Henrique Oliveira (Brazilian, born 1973), *Xilempasto 6*, 2013, plywood and pigment. Pamela K. and William A. Royall, Jr. Fund for 21st-Century Art and Aldine S. Hartman Endowment Fund, 2014.4a-b