

# At-Home Art Activity

## Create Your Community

Benjamin Wigfall was born on November 17, 1930, in Richmond, VA. He grew up in the Church Hill area and later moved to New York State where he created what was known as Communications Village. Communications Village was a community art center that met in a large brick building. Wigfall invited members from his community, both students and teachers, to join him there for workshops. Here, the students learned various art making techniques such as printmaking, photography, and more. Communications Village preserved stories of the community.

An educator, printmaker, abstract and assemblage artist, Wigfall was the youngest artist to have a work enter the VMFA collection. His work focuses on the connection between art, community, fairness and justice. Wigfall works serve as *visual expressions unique to Black communities*.

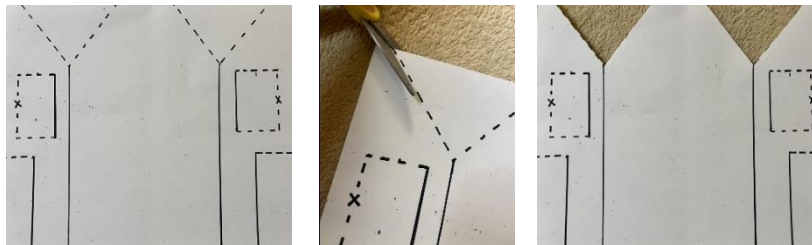
Be inspired by this photo sculpture of Communications Village by Rose Tripoli and Wigfall's ideas to create your own community space! Follow the steps below to make your building and fill it with family, friends, teachers and community members that have had an impact on you.

### Materials:

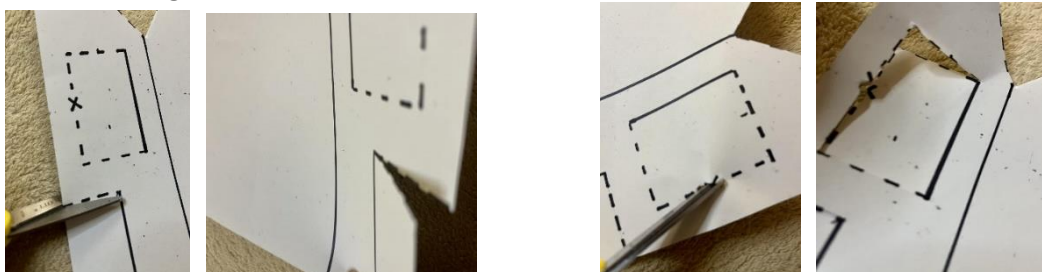
- Pencil
- Colored pencil or crayons
- Scissors
- Building template found online at [VMFA.museum](http://VMFA.museum) (*template can be printed on 8.5x11 printer paper*)

### Instructions:

1. Print your building template on 8.5x11 printer paper. This template can be found on the VMFA virtual Family Day event page at [vmfa.museum](http://vmfa.museum). Follow the template and cut along the dashed lines. Use scissors to cut out the top two triangles.

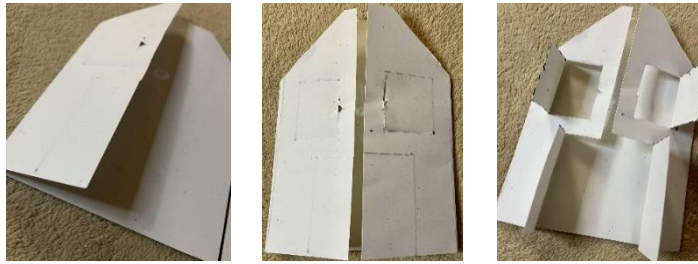


2. Use scissors to continue cutting along the dashed lines. You will cut out the doors and windows to your house. Be careful not to cut along the solid lines.



*Communications Village Cut-Out, ca. 1974-76, Rose Tripoli, Benjamin L. Wigfall Artist Archives (VA-12), Gift of Michael Gino Wigfall and Gia Oke-Bello, Margaret R. and Robert M. Freeman Library, VMFA Archives, Richmond, Virginia, VA.*

- Along the two solid lines, fold each side of your paper into the center. Next, fold the windows and doors back so you can see inside of your house.



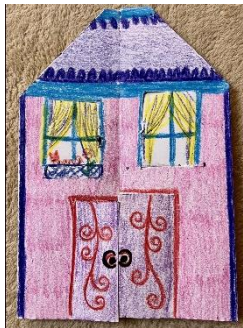
- Once your house is assembled, use color pencils or crayons to draw your family, friends, teachers, or other impactful persons in the window and doors of your house. Use a pencil or pen to trace the inside of the window and doors to create a frame to draw your community members.



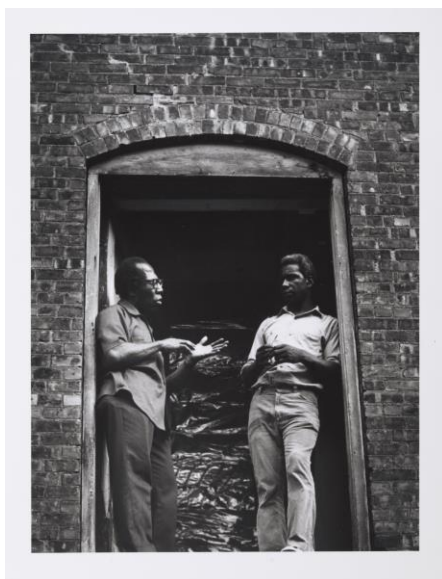
- Consider what your house represents. What activities will take place? Will people teach classes there? Use color pencils to design and color your house.



- Display your community house and be inspired to celebrate your own community!



## Collection Connection:



*Untitled (Description: Robert Blackburn and Benjamin Wigfall in doorway of Communications Village)*, 1972-1982, Rose Tripoli, American, Active 20<sup>th</sup> century (Artist), Photography, Modern and Contemporary Art, 2022.239

VIRGINIA MUSEUM OF FINE ARTS

200 N. Arthur Ashe Blvd. | Richmond, VA 23220 | T 804.340.1400 | [www.VMFA.museum](http://www.VMFA.museum)

## Explore at VMFA!

Come to VMFA to see the ***Whitfield Lovell: Passages*** special exhibition. On view from Jun 17 – Sep 10, 2023. **Two artists. Two exhibitions. One Ticket.** Your ticket includes access to both *Whitfield Lovell: Passages* and *Benjamin Wigfall and Communications Village*.

**VMFA**  
VIRGINIA MUSEUM OF FINE ARTS