



Interactive Exercise: Question into Monologue

Artworks can offer an opportunity to consider different perspectives. Artists are intentional about how they depict people alone or in groups. Spending time to look carefully at expressions, body language, and contextual clues in figural artwork can help students consider ideas about identity, community, and belonging. Use this interactive exercise to guide students as they explore a work by Kehinde Wiley, creatively document the ideas it presents to them, and consider how their thoughts connect with the artist's own ideas and intentions.

Grade Level:	Adult, College, Grades 6-8, Grades 9-12, Teacher Professional Development
Collection:	African American Art
Culture/Region:	America
Subject Area:	African American, Communication, Creative Thinking, Critical Thinking, Theatre Arts, Visual Arts
Activity Type:	Distance Learning, Engagement Activity

PERSPECTIVE

Spending time with artworks that depict people can help us consider different perspectives. Give it a try with one of VMFA's most important artworks, a painting by artist Kehinde Wiley.

You don't have to be a scholar or an art specialist to take a closer look and think carefully about this artwork. All you will need is a little bit of time, some curiosity, your imagination, and something to write with! Just click through the slides below.

For the best experience, please click on the full screen icon to view.

Other Objects to Try

You may want to try this Question into Monologue approach with some other artworks in the VMFA collection. What do you think of these?

House at Dusk

Edward Hopper, American, 1882 - 1967 (Artist)



Town of Hope

Archibald John Motley Jr., American, 1891 - 1981 (Artist)



On the Rio Grande (Rio Grande November)

Walter Ufer, American, 1876 - 1936 (Artist)



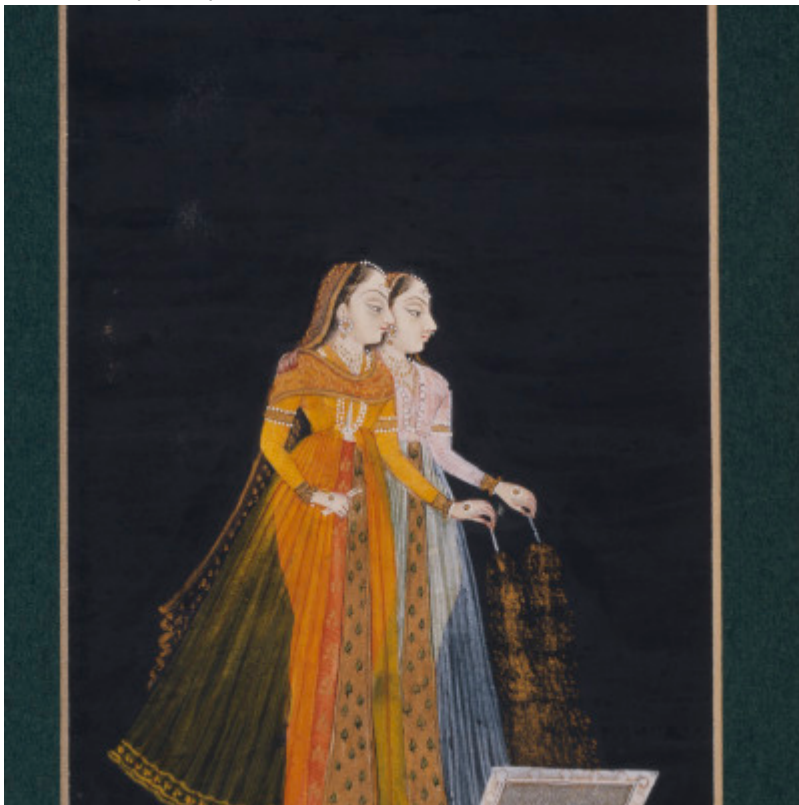
Relief of a Potter and His Wife

Unknown (Artist)



Two Women with Fireworks

Unknown (Artist)



Untitled 21

Sammy Baloji, Congolese, born 1978 (Artist)



You may want to try this Question into Monologue approach with some other artworks in the VMFA collection. What do you think of these?