

## What You Need to Know

### Accessibility and Accommodations for All

VMFA welcomes visitors of all abilities. Wheelchairs and motorized scooters are available at Coat Check. To inquire about additional accessibility resources, stop by the Visitor Services Desk.

### Children and Families

Children under the age of 13 must be accompanied by an adult at all times. Strollers are welcome in the galleries and can be borrowed from Coat Check. A Caregiver's Lounge is located near the Interactive Family Lounge.

### Values and Personal Safety

To help promote a culture of civility, join us in showing courtesy to all. Harassing, discriminatory, or threatening behavior is strictly prohibited.

### Photography and Videography

Personal photography and videography are allowed. Flash photography, tripods, and selfie-sticks are not allowed. All photos must be for personal or educational non-commercial use only.

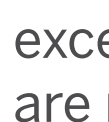
For professional and commercial photography policies and for a complete list of museum policies and resources, visit [www.VMFA.museum/visit/plan-ahead](http://www.VMFA.museum/visit/plan-ahead)



Food and drinks may not be consumed in the galleries.

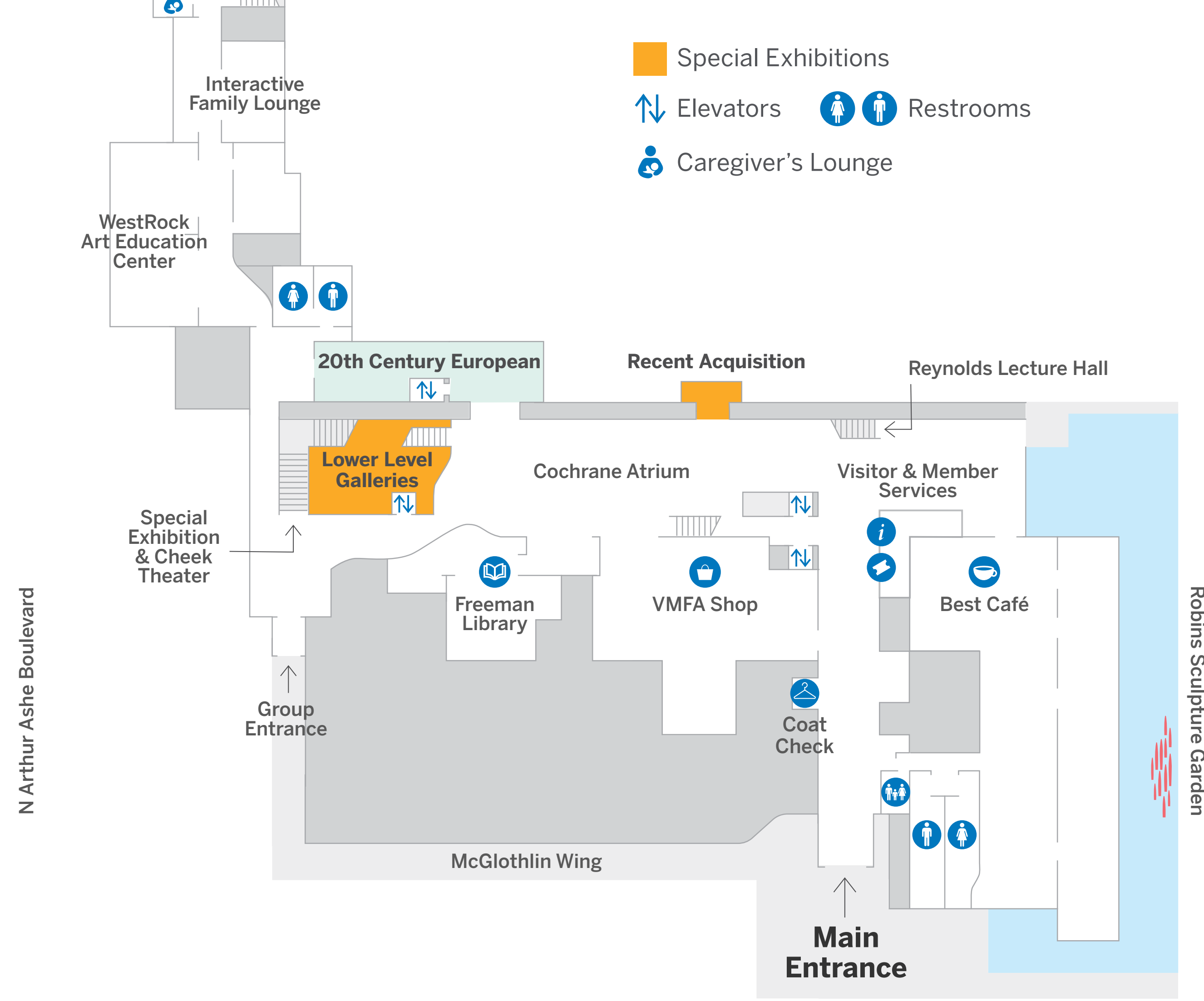


Please do not touch the art, display cases, and pedestals throughout the museum and in the Sculpture Garden.



Umbrellas and items exceeding 16" x 13" x 8" are not permitted in the galleries and may be left at Coat Check.

## Level 1



## Level 2

### The Collection

Experience nearly 50,000 works of art, spanning 6,000 years of world history.

Special Exhibitions

Elevators



Restrooms

### Pardon Our Dust

VMFA is embarking on an exciting expansion project that will enable us to share more art and tell more stories. Pardon our dust and any temporary gallery closures that you may encounter on your visit. Learn more at [www.VMFA.museum](http://www.VMFA.museum).



### AUDIO TOUR

"Beyond the Label" is an audio tour to get you started with several VMFA favorites. Available in English and Spanish.



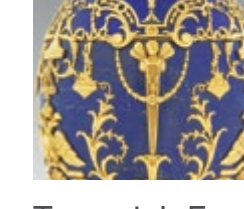
Catfish Row



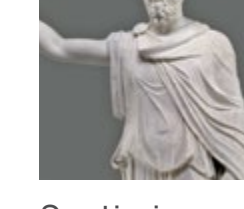
Wall Drawing #541



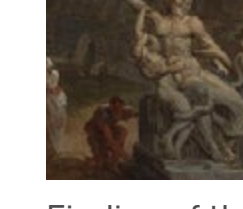
Field of Poppies



Tsarevich Egg



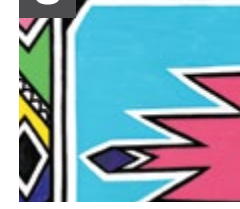
Septimius Severus



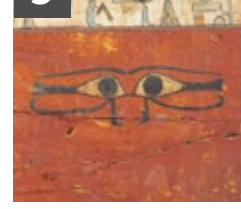
Finding of the Laocöon



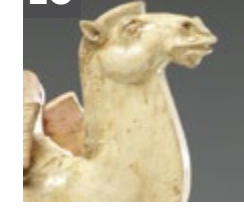
Jaguar



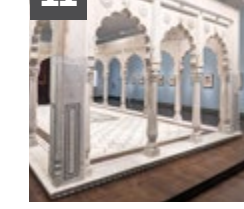
Ndebele Design



Tjeby (mummy)



Bactrian Camel



Garden Pavilion

## Level 3



## Hours & Services

### Open 365

Sat–Tue 10 am–5 pm  
Wed–Fri 10 am–9 pm

### Parking Deck

Daily fee \$6 (free for VMFA members)  
Free street parking may be available.

### VMFA Shop

Daily 10 am–5 pm  
Wed, Thu & Fri until 9 pm  
[www.vmfashop.com](http://www.vmfashop.com)

### Best Café

Sat–Tue 10 am–4:30 pm  
Wed–Fri 10 am–8:30 pm

### Amuse Restaurant

Sat–Tue 11:30 am–4:30 pm  
Wed–Fri 11:30 am–8 pm

### Floris at VMFA

Sat–Wed 11:30 am–4pm

### Freeman Library

Mon–Fri 11 am–5 pm

## Stay Connected



[Subscribe](#) to our emails.



Become a [VMFA member](#).

Learn more at [www.VMFA.museum](http://www.VMFA.museum).

## Follow Us

@vmfamuseum

