

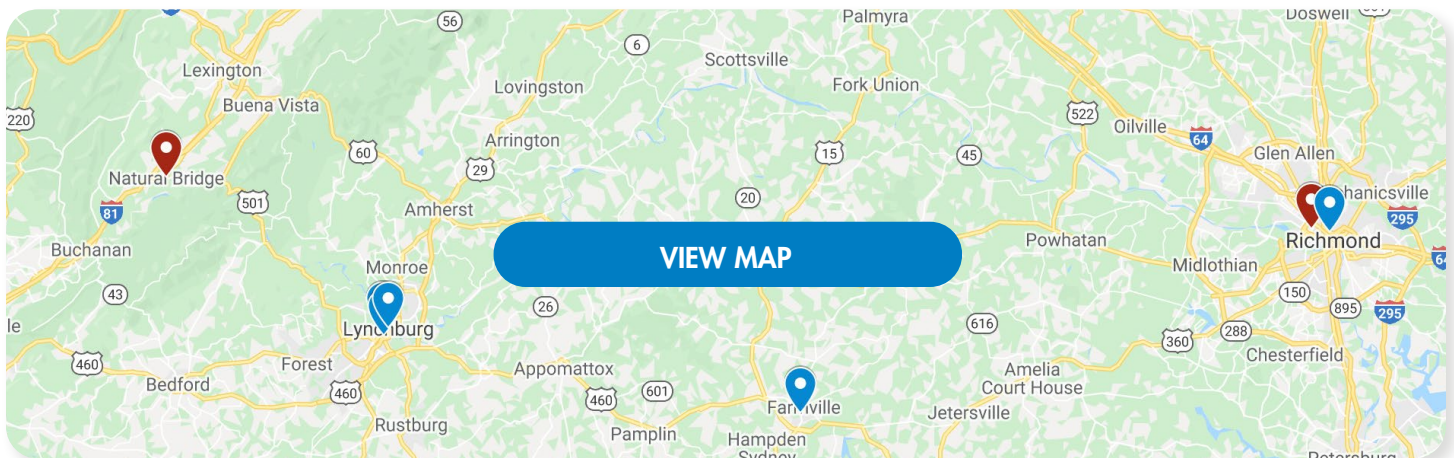


BLACK HISTORY ROUTE

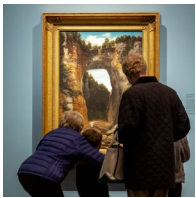
VMFA to the Natural Bridge

Take a road trip to the Natural Bridge along a curated path that explores Black history in Virginia. Traveling by car, complete this route in its entirety, making all the suggested stops along the way, or pick and choose destinations to create your own itinerary. In approximately 162 miles—from VMFA in Richmond to the Natural Bridge State Park in Rockbridge County—explore the Commonwealth and the beauty of art and nature. The trip is inspired by the exhibition *Virginia Arcadia: The Natural Bridge in American Art* at the **Virginia Museum of Fine Arts** through August 1, 2021.

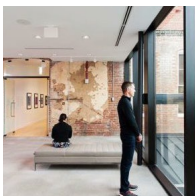
For up-to-date information on the destinations listed here, including hours of operation and other details, visit their websites.



POINTS OF INTEREST



Virginia Museum of Fine Arts: At VMFA, the free special exhibition *Virginia Arcadia: The Natural Bridge in American Art* showcases paintings, prints, decorative arts, photography and more. Experience the exhibition and VMFA's permanent collection as well as more than three acres of gardens, green spaces, and outdoor sculptures, including *Rumors of War* by Kehinde Wiley. VMFA is open 365 days a year: Daily 10 am–5 pm and until 9 pm Wed–Fri. General admission is free. www.VMFA.museum



Black History Museum and Cultural Center of Virginia: Located in Richmond's historic Jackson Ward, the Black History Museum and Cultural Center of Virginia highlights Black history in Virginia beginning with the antebellum era. Hours are Thu–Sun, 10 am–5 pm. www.blackhistorymuseum.org



Robert Russa Moton Museum: The Robert Russa Moton Museum in Farmville highlights the efforts of young students during the civil rights movement in Virginia. Once Robert Russa Moton High School, the Moton Museum was transformed in 2013 to honor the 1951 Moton student strike. Led by Barbara Johns, the strike significantly contributed to the success of the 1954 *Brown v. Board of Education* Supreme Court case. www.motonmuseum.org

(continued)

Legacy Museum: The Legacy Museum in Lynchburg presents various exhibits on African American heritage, focusing on history beginning in 1800. Formed from the NAACP-backed Legacy Project in Lynchburg, the Legacy Museum is open Wed–Sat noon–4 pm and Sun 2–4 pm. www.legacymuseum.org

Anne Spencer House and Garden Museum: The Anne Spencer House and Garden Museum honors the life of Virginia native Anne Spencer, a civil rights activist and poet who contributed to the founding of the NAACP's branch in Lynchburg. Visitors can tour her expansive garden and home, which was turned into a museum upon her death in 1975. www.annespencermuseum.com

Heritage Connection Gifts: Heritage Connection Gift Shop offers a unique shopping experience in the heart of Lynchburg. In addition to souvenirs, Heritage Connection also sells handcrafted jewelry, glassware, custom floral arrangements, and alteration services. www.facebook.com/heritageconnection

Natural Bridge State Park: Visit Virginia's iconic natural wonder. The 400-million-year-old rock formation measures 215 feet high and 90 feet wide. The experience will leave you in awe of nature's creation and its majestic beauty. Accommodations for those with accessibility needs can be made upon request at the park's Visitor Center 10 am–6 pm. Park hours: Daily 8 am–Dusk, weather permitting. www.dcr.virginia.gov/state-parks/natural-bridge

PLACES TO EAT

VMFA (Richmond): The Virginia Museum of Fine Arts features fine dining in Amuse, casual fare in Best Café, and curbside pick-up menus through VMFA 2Go. Visit the museum's website for menu details and hours of operation. www.VMFA.museum

Southern Kitchen (Richmond): Southern Kitchen in downtown Richmond specializes in classic soul food. Featured on Food Network's show Chopped, Southern Kitchen's chef Shane Robert-Thomas serves sandwiches, fried chicken, and seafood with a southern flare for lunch and dinner. Open Thu–Sat noon to 9 pm; Sun noon to 7 pm. www.southernkitchenrva.net

Brewer's Waffles (Richmond): Brewer's Waffles offers gourmet sweet and savory waffles as well as milkshakes! Open daily 8 am–2 pm, Brewer's is the perfect place to stop for a unique twist on classic waffles and milkshakes. www.brewerswaffles.com

Babcock House (near Farmville): The Babcock House is an inn and restaurant in Appomattox. Specializing in southern cuisine, the Babcock House is open for lunch and dinner Wed–Sat and for brunch on Sun. www.babcockhouse.com

Country Cooking by Irene (Lynchburg): Situated in the Lynchburg Community Market, Country Cooking by Irene offers a casual dining experience with classic southern comfort food. www.facebook.com/pages/Country-Cooking-by-Irene

PLACES TO STAY

Museum District Bed & Breakfast (Richmond): Experience the comforts of home while relaxing in the heart of Richmond's Museum and Fan Districts and just across the street from VMFA. www.museumdistrictbb.com

Linden Row Inn (Richmond): Located in Richmond's Monroe Ward district, the Linden Row Inn offers comfortable lodging with convenient proximity to downtown attractions, including the Virginia Museum of Fine Arts. www.lindenrowinn.com

Natural Bridge Historic Hotel & Conference Center (Natural Bridge): Natural Bridge Historic Hotel & Conference Center is conveniently located within the Natural Bridge State Park and has 152 rooms. The hotel features two restaurants and a patio with stunning views of the Blue Ridge Mountains. www.naturalbridgeva.com/about

