

Undiscovered Gem *of the* Lone Star State

# MARFA

with Dallas & Fort Worth  
November 2–7, 2017

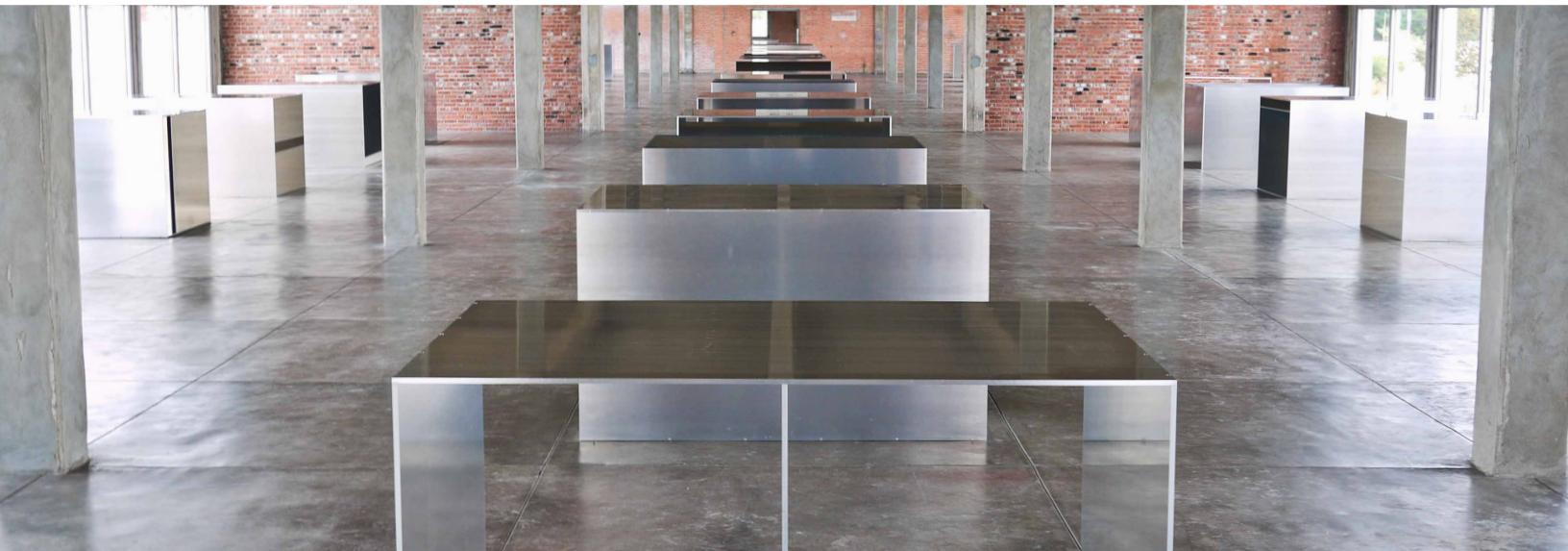


# Experience the plains of Texas through the eyes of America's greatest artists.

Discover the secret vibrancy of Marfa, the artistic community built by Donald Judd and his minimalist contemporaries that has attracted the greatest installation artists in the world. Marfa's desert landscape has inspired hundreds of brilliant sculptures and installations, creating a true renaissance for minimalist art. Take in cosmopolitan life in Dallas and Fort Worth—"where the West begins"—enjoying special access to private collections in local homes. Speak with the curators of the fascinating museums and galleries that transformed the Dallas/Fort Worth area into an artistic hub for the South. Join us for an unforgettable look at Texan culture and artistic ingenuity.

## Tour Highlights

- A local artist's studio in Marfa, opened exclusively for VMFA
- A sunrise visit to the incredible *Prada Marfa* installation
- A tour of the unparalleled Chinati Foundation, the great minimalist playground of Donald Judd and his contemporaries
- Private art collections in the grandest homes of Dallas and Fort Worth



## Study Leader: Dr. Sarah Eckhardt

Dr. Sarah Eckhardt, VMFA's Associate Curator of Modern and Contemporary Art, joined the museum in 2011. She received her BA from Valparaiso University and her MA and PhD from the University of Illinois at Urbana-Champaign, where she was awarded a Henry Luce Dissertation Fellowship for her dissertation, *Hedda Sterne and the Abstract Expressionist Context*. At VMFA her department is responsible for the museum's early 20th-century European holdings as well as the mid-to-late 20th-century and 21st-century collections, including photography and the sculpture garden. Before coming to VMFA, she worked at the Krannert Art Museum at the University of Illinois in Urbana-Champaign and at The Menil Collection in Houston, Texas.



# Custom Itinerary

*This custom travel program has been created uniquely for the Virginia Museum of Fine Arts.*

**Thursday, November 2, 2017**

## Arrivals

Fly to Midland International Airport (MAF) and take a private group transfer to Marfa. After checking into our hotel, join your fellow travelers for an enchanting welcome dinner.

*Hotel Saint George, Marfa (D)*

**Friday, November 3, 2017**

## An Insider's Marfa

Begin the day at the Judd Foundation, which houses the incredible collection of Donald Judd, America's pioneer of minimalism. Visit The Block, a complex of buildings in downtown Marfa that houses both Judd's installations and the two-story house he renovated into his private home. Break for lunch at a local artisan pizzeria before visiting the Chinati Foundation, founded by Donald Judd to preserve and present permanent large-scale installations. The Foundation encompasses 340 acres of land filled with more than 150 different installation pieces by Judd, Dan Flavin, Carl Andre, Ingólfur Arnarsson, Ilya Kabakov, and Claes Oldenburg, among others. This evening, enjoy a relaxed dinner with your fellow travelers.

*Hotel Saint George, Marfa (B, L, D)*

**Saturday, November 4, 2017**

## Farewell to Marfa

Wake up early to catch the sunrise over *Prada Marfa*, the infamous sculpture installed just outside Marfa by the European duo Elmgreen & Dragset. Return to Marfa, where we are the special guests of Ballroom Marfa, a nonprofit contemporary art space that hosts visual art, film, music, and performance. End the morning exploring the Arber Studio, a print shop that embodies the spirit of West Texan art, from the woodcuts to the lithographs to the half-built motorcycles. This afternoon, head back to Midland Airport to board flights to the Dallas/Fort Worth area. Check into our hotel and enjoy the rest of the day at leisure.

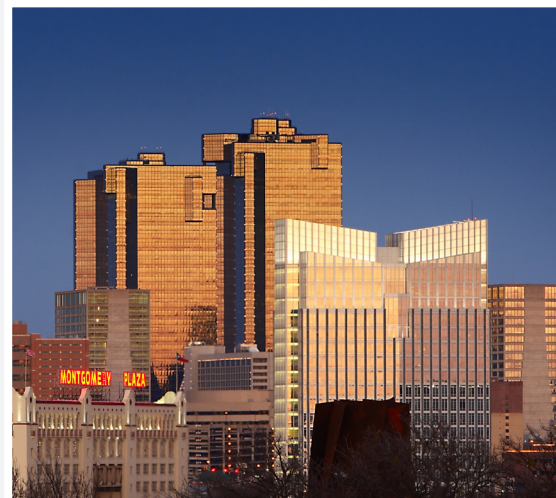
*Omni Fort Worth Hotel (B, L)*

**Sunday, November 5, 2017**

## Modern Art & Innovation

Explore the innovative collections of the Fort Worth art scene, beginning at the Modern Art Museum, an architectural gem that visitors often miss. Experience the grandeur of the Kimbell Art Museum, including a special stop by their fascinating exhibition on the life of Giacomo Casanova. After lunch at the Kimbell's charming café, visit the Amon Carter Museum of American Art to see Gabriel Dawe's latest installation. Enjoy the evening at leisure.

*Omni Fort Worth Hotel (B, L)*



**Monday, November 6, 2017**

## Exploring Dallas/Fort Worth

Spend the morning in the iconic halls of the Dallas Museum of Art. Venture off the beaten path to the Nasher Sculpture Center, a contemporary collection that rotates seasonally. Next, visit The Sixth Floor Museum, which documents the life, assassination, and legacy of President John F. Kennedy including multimedia exhibits on the social and political movements of the 1960s. This evening, gather with your fellow travelers for a farewell dinner overlooking Sundance Square, the bustling heart of downtown Fort Worth.

*Omni Fort Worth Hotel (B, D)*

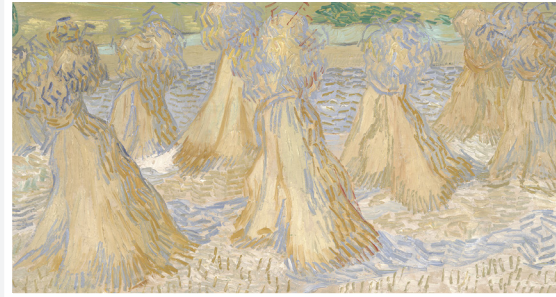
**Tuesday, November 7, 2017**

## Private Collections

Spend the morning visiting the private homes of Fort Worth collectors who have scoured the globe for unique pieces. At noon, travel to Dallas Fort Worth International Airport (DFW) for independent flights home.

*(B)*

Photos (from top): *Sheaves of Wheat* (detail) by van Gogh (1890), Dallas Museum of Art; Downtown Fort Worth "vintage" architecture (Payton Chung); and Donald Judd's freestanding works in concrete, Marfa (Punktoad)



# Trip Information

## UNDISCOVERED GEM OF THE LONE STAR STATE: MARFA, WITH DALLAS AND FORT WORTH

**DATES:** November 2–7, 2017

### TOUR COST:

Land Package .....\$3,595  
Single Supplement ..... \$750

*Land Package price is per person, based on double occupancy with a minimum of 15 paying participants. Tour prices are calculated as of February 2017 and are subject to change.*

**ACTIVITY LEVEL:** Moderate, good walking ability

**DEPOSIT & FINAL PAYMENT:** A deposit of \$1,000 per paying participant will be required to guarantee participation in the program. This may be paid by check, or by Visa or MasterCard. Final payment will be invoiced and is due on July 25, 2017. Final payment must be made by check payable to International Seminar Design, Inc. Registrations will be accepted beyond this date on a space-available basis with payment in full by check.

**FLIGHTS:** Airfare arriving into Midland and departing from Dallas-Fort Worth is not included in the package cost.

**TERMS & CONDITIONS:** International Seminar Design, Inc. (ISDI) acts only as an agent for the participant with respect to transportation, accommodations, and all other services relating to this tour. ISDI, the Virginia Museum of Fine Arts (VMFA), and/or their agents assume no responsibility or liability for any act, error or omission, or for any injury, loss, accident, delay or irregularity, which may be caused by any defect in any aircraft, ship, train, bus, or other carrier, or through neglect or default of any subcontractor or other third party, which may be used wholly or in part in the performance of their duty to the participants of the tour. ISDI and VMFA reserve the right to cancel any tour prior to departure for any reason including insufficient numbers of participants, as well as the right to decline to accept or retain any person as a member of the tour at any time. If bookings fall below the minimum required, passengers will be advised of additional costs or itinerary alterations before departure date.

**CANCELLATIONS & REFUNDS:** All cancellations must be received in writing by ISDI, and charges are calculated as of the day notification is received in writing by ISDI. If a tour member cancels, the following scale of charges is incurred: There is a non-refundable administrative fee of \$500 per person. The costs associated with any tickets purchased for planned activities (as indicated in the itinerary) are non-refundable. Written cancellation received by ISDI before or on July 25, 2017: full refund minus \$500 per person

administrative fee. Written cancellation received by ISDI on July 26 through September 18, 2017: 50% of total tour costs. Cancellations received on or after September 19, 2017: no refund. No refunds for any unused portion of the tour including, but not limited to, occasional missed meals or any missed sightseeing tours. Costs for promotion, staff, and other group expenses are not refundable. In the case of cancellation, substitutions are not accepted. The tour cost is non-transferable, and no substitutions are allowed. If ISDI or VMFA cancels the tour due to low registrations, active registrants will receive a full refund of all tour payments. © 2017 International Seminar Design, Inc., CST 2072963-40, WST 603578109

**TRAVEL INSURANCE:** ISDI and VMFA strongly recommend the purchase of trip cancellation insurance. ISDI will send you travel insurance information upon tour registration. In the event that you must cancel your participation in a travel program, trip cancellation insurance may be the only source of reimbursement.

**TOUR PRICE INCLUSIONS:** Accommodations in hotels as outlined in the itinerary, based on double occupancy; breakfast daily, three (3) lunches, three (3) dinners including two glasses of wine at each dinner, coffee and tea included with each lunch and dinner; services of an experienced ISDI Tour Manager; air transport from Marfa to Fort Worth; land transportation by deluxe air-conditioned motor coach; all sightseeing and admission charges as outlined in the itinerary; one group transfer from the Midland airport upon arrival and one to the Dallas Fort Worth airport upon departure; portage of one piece of luggage per person at the hotels; bottled water during daily excursions, service charges, taxes, and basic gratuities for meals included in the itinerary; gratuities for guides and bus drivers; and complete pre-departure documentation and materials, including recommended reading list, destination information, and luggage tags.

**TOUR PRICE EXCLUSIONS:** Airline tickets to Midland and departing Dallas/Fort Worth; transfers to and from airport for those not using group transfers; domestic airline taxes, fuel surcharges, and airport portage; personal items such as wines, liquors, à-la-carte orders, meals other than specified, personal services, room service; gratuities for hotel housekeeping, valet/laundry service, and tour deviations. If due to weather, flight schedules, or other uncontrollable factors, you are required to spend any additional nights, you will be responsible for your own hotel, transfer, and meal costs. Personal insurance for health, baggage, and tour cancellation is not included. Tour cancellation/Interruption Insurance is strongly recommended.

Undiscovered Gem *of the* Lone Star State

# MARFA

with Dallas & Fort Worth  
November 2-7, 2017

Enclosed is my credit card information or deposit by check made payable to International Seminar Design, Inc. in the amount of \$1,000 per person.

Participant 1 Full Name

Participant 2 Full Name

Address (billing, if using credit card)

City

State

Zip

Daytime Telephone

Cell Phone

E-mail Address |  *please send mailings to my email to receive information more quickly*

\_\_\_\_\_ # of persons \_\_\_\_\_ Amount Enclosed

**LAND PACKAGE DEPOSIT (\$1,000 PER PERSON):**

Visa  MasterCard  Check *Make check payable to International Seminar Design, Inc.*

Card Number

Exp. (mm/yy)

Name as it appears on credit card

Billing Zip Code (if different from above)

**ROOMING OPTIONS:** *(please select)*

- Double Occupancy; I will share a room with \_\_\_\_\_  
 Single Supplement (\$750)  
 I would like a roommate but will pay the price of the single supplement if one cannot be found.

**EACH PARTICIPANT MUST SIGN** *(registration invalid without signature)*

*The undersigned has read the tour itinerary and recognizes and accepts any risks therein. The undersigned also understands and hereby agrees for and on behalf of his/her dependents, heirs, executors, administrators and assigns to abide by the conditions set forth in the terms and conditions listed in this brochure and to release and hold harmless the Virginia Museum of Fine Arts, International Seminar Design, Inc (ISDI) and any of their officers, trustees, agents, licenses, or representatives from any and all liability for delays, injuries, or death or for the loss of and/or damage to his/her property however occurring during any portion of, or in relation to, this tour.*

Signature Participant 1 / Date

Signature Participant 2 / Date

**COMPLETE AND RETURN THIS FORM TO:**

International Seminar Design, Inc.  
4115 Wisconsin Avenue NW, Suite 101  
Washington, DC 20016  
Email: info@isditravel.com | Fax: (202) 244-1808

For Questions: Call (202) 244-1448

**VMFA**  
VIRGINIA MUSEUM OF FINE ARTS