



Guanacos, Torres del Paine National Park

Patagonia & the Chilean Fjords

JOURNEY AROUND CAPE HORN | 12 DAYS | 11 NIGHTS

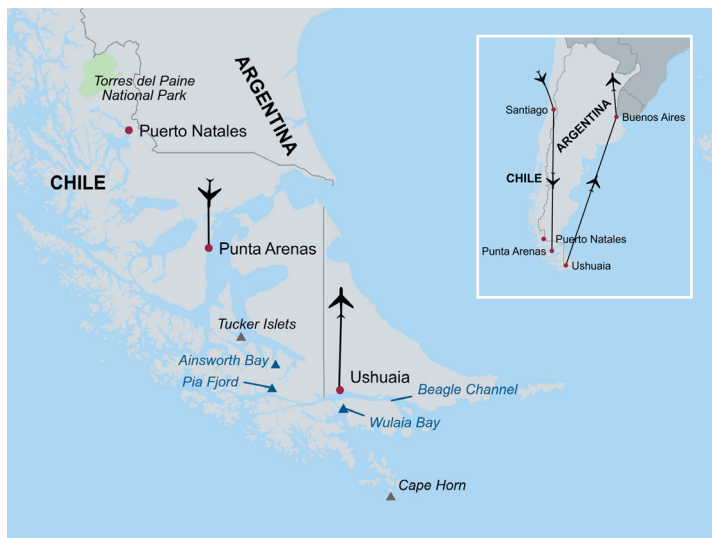
ITINERARY

- | | | | |
|--------------|--|---------------|--|
| Day 1 | Depart home city | Day 8 | Ainsworth Bay/
Tucker Islets |
| Day 2 | Santiago | Day 9 | Beagle Channel/
Pia Fjord |
| Day 3 | Santiago | Day 10 | Wulaia Bay/Cape Horn |
| Day 4 | Fly to Punta Arenas/
Puerto Natales | Day 11 | Ushuaia/
Disembark ship/
Fly to Buenos Aires/
Return to home city |
| Day 5 | Puerto Natales | Day 12 | Arrive in home city |
| Day 6 | Torres del Paine
National Park | | |
| Day 7 | Punta Arenas/Embark
<i>Stella Australis</i> | | |

Note: Itinerary is subject to change.

EXCLUSIVELY YOURS

- Exclusive land and sea voyage** to explore the breathtaking beauty of Patagonia's glaciers and the Chilean fjords.
- Created in our tradition of **innovative programming and educational travel**.
- Access to ports unavailable to larger vessels and **included excursions during your program**.
- Specially arranged full-day excursion to the sensational Torres del Paine National Park and the Milodón Caves**, where the remains of an extinct giant sloth were discovered.
- Two **UNESCO Biosphere Reserves**— **Torres del Paine and Cabo de Hornos**.
- Easter Island Pre-Tour Extension and Buenos Aires and Iguazú Falls Post-Tour Extension.



2025 DEPARTURES, PRICING & SAVINGS

October 22 to November 2 | Program Begins: October 23

Standard Rate from \$8,095

Early Booking Savings \$1,000

Early Booking Rate from \$7,095*

Rates are per person, based on double occupancy, excluding taxes. For single pricing and availability please call for details.

Port taxes are an additional \$115 per person. Customers will be notified of any fuel surcharge fee prior to final payment.

*Valid when you pay in full at time of booking and book by 3/11/25.

PROGRAM FEATURES

Your Travel Program

- Two nights** in Santiago, Chile, at the Hyatt Centric Las Condes Hotel.
- Three nights** in Puerto Natales at the Hotel Costaustralis Puerto Natales.
- Four-night cruise** from Punta Arenas, Chile, to Ushuaia, Argentina.
- Well-appointed, first-class accommodations.
- All transfers during the Land and Cruise Program: flights and deluxe motor coaches.
- Captain's Welcome and Farewell Receptions.
- Complimentary non-premium liquor, house wine, beer, nonalcoholic beverages and minibar service throughout the cruise; complimentary house wine and beer at lunch and dinner and nonalcoholic beverages at all meals during the land program.
- 2 receptions, 9 breakfasts, 8 lunches and 7 dinners.
- Complimentary Wi-Fi access (conditions permitting).
- Learn about the unique land formations and amazing wildlife of these wondrous southern regions from local experts.
- Embark on a Santiago city tour, followed by visits to two vineyards with wine tastings.
- Venture through emerald landscapes while cruising the Última Esperanza Sound, plus enjoy a walk through Bernardo O'Higgins National Park.
- Discover the imposing Milodón Caves and sight jaw-dropping vistas at glacially fed Grey Lake.
- Delight in a visit to Estancia Cerro Negro and dig into a special Patagonian lunch.

—Get close-up views of adorable Magellanic penguins and other colorful and exotic bird species on an excursion at Tucker Islets.

Traveler's Choice

Elevate your experience with a selection of included excursions. Join the excursion of your choice in the following locations:

- Ainsworth Bay: sub-polar forest walk or glacial crest active hike.
- Pía Fjord zodiac excursions: Pía boulders or Pía lookout.
- Wulaia Bay: peak excursion, forest lookout excursion or beach excursion.

UNESCO

Visit these Biosphere Reserves:

- Torres del Paine National Park, a paradise of imposing peaks and turquoise glacial lakes.
- Cabo de Hornos, including a visit to the Cape Horn monument.

Always Included

- Transfers and luggage handling abroad for passengers who book their air through Gohagan & Company.
- Experienced, English-speaking local guides for included excursions.
- Gratuities to local guides and drivers on included excursions and transfers.
- Complimentary bottled water in your room and on excursions.
- Hospitality desk.
- Experienced Gohagan & Company Travel Directors at your service.
- Complimentary audio headset during guided excursions.
- Automatic \$250,000 flight insurance policy for each participant ticketed on flights by Gohagan & Company.



Stella Australis
Exclusively Chartered, First-Class Small Ship

PRE-TOUR EXTENSION



Easter Island | 5 days, 4 nights
October 18 to 23, 2025 | Program Begins: October 19

POST-TOUR EXTENSION



Buenos Aires & Iguazú Falls | 5 days, 4 nights
November 1 to 6, 2025 | Program Ends: November 6

All Program Features are contingent upon final brochure pricing. 2025

Gohagan & Company
8550 West Bryn Mawr Avenue
Chicago, Illinois 60631

