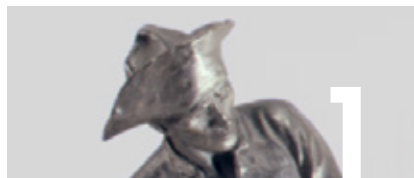


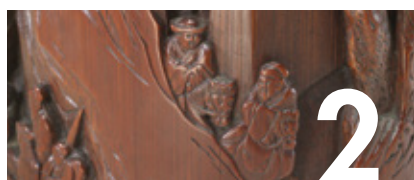
GALLERY HUNT Celebrate the Year of the Wood Horse!

According to Chinese astrology, people's personalities are influenced by the position and movement of stars, moons, and planets at the time of their birth. Each year of the Chinese zodiac is related to one of twelve animals and a natural element. The horse represents independence and a hard-working, strong, and high-spirited nature. Explore the galleries to see horses depicted in artworks from around the world.



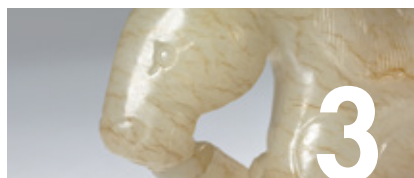
American Galleries, Level 2

Horses have been used for pulling carriages, wagons, and farming equipment, as well as charging into battles in both Western and Eastern cultures. Frederic Remington's sculpture shows a skilled horseman commanding an irritable steed. Think American cowboy! *Make a list of the tools and equipment needed for riding a horse. See the label for clues.*



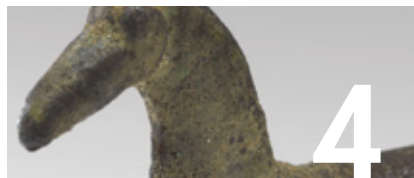
Chinese Gallery, Level 2

The element of 2014 year is wood. A person born in the year of the wood horse is thought to be a good leader who is direct but also unwilling to bend. Find this small scene with a horse carved from bamboo. *Describe sounds these travelers may have heard in this mountain passage.*



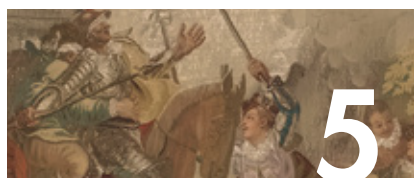
Chinese Gallery, Level 2

China's Jade Emperor is said to have hosted a great race among the animals. The first twelve to finish won a spot on the zodiac calendar. The horse is thought to have placed seventh. Find this tiny horse treasure and meet other zodiac animals, buffalo (ox) and ram. *If you were the Jade Emperor, what animals would you invite to race?*



Ancient Greek Gallery, Level 2

Horses were used in both Greece and China to carry warriors. In a famous ancient tale of trickery, the Greek army hid inside a large wooden horse and presented it as a gift to their enemies, the Trojans. When the soldiers emerged, they quickly defeated the Trojans. Bronze horses were among the most common gifts dedicated to the Greek gods. *Give this tiny one a name.*



European Galleries, Tapestry Hall, Level 2

Find one last wooden horse that also involves a tale of trickery. Don Quixote, a noble gentleman on a quest for honor and chivalry, is tricked into believing he is riding a magical wooden horse that can fly through the air. *What visual clues show how Don Quixote came to believe he was truly flying?*
