

Please help us to protect the art and make the museum a pleasant experience for all visitors by following these simple rules.

- Cameras and videos are permitted in our permanent collection areas and in the special exhibition galleries for **Rodin: Evolution of a Genius**. Sorry, no tripods, flash, or artificial light allowed.
- Food, beverages, candy, and gum are not allowed in the galleries.
- Shopping bags, backpacks, baby backpack carriers, umbrellas, and all purses, briefcases, or packages larger than 16 x 13 x 8 inches must be checked at the Coat Room (off the Atrium).
- Individual artists, classes, or groups of up to 50 people are welcome to sketch in our permanent collection galleries only. Sketching is not allowed in special, temporary, or loan exhibitions. **Use pencils only**, on drawing pads no larger than 18 x 24 inches. For more information, call Tour Services at 804.340.1419.
- Visitors are asked not to touch works of art in the museum. Even the slightest fingerprint contains chemicals that endanger even the hardest surfaces.
- **Free Wi-Fi** is available in the museum and Sculpture Garden. To connect, select the **VMFA Guest** network and accept terms of service.
- For more information, please phone 804.340.1400 or visit the VMFA website.

#### MUSEUM HOURS

Open 365 days a year.  
Daily, 10 am–5 pm | Thu and Fri until 9 pm

#### INFORMATION

804.340.1400 | www.VMFA.museum

#### TOURS

HIGHLIGHTS | SELF-GUIDED  
Inquire at the Visitor Services Desk.

#### SHOPPING & DINING

VMFA SHOP  
Museum hours

#### BEST CAFÉ

Light fare and coffee bar, 10 am–4:30 pm  
Lunch, 11 am–2 pm  
Dinner (Thu and Fri only), 5–8:30 pm  
Live Jazz (Thu only), 6–9 pm

#### AMUSE RESTAURANT

Sunday Brunch, 11:30 am–2:30 pm  
Lunch, 11:30 am–2:30 pm  
Small Plates, 2:30–4:30 pm  
Dinner (Thu and Fri only), 5–8:30 pm  
Reservations: 804.340.1580 (last reservation at 8 pm)

#### LIBRARY

Mon–Fri, noon–5 pm

#### PARKING DECK

Daily, 8 am–7 pm | Thu and Fri until 9 pm  
Free to VMFA members; nonmembers \$5 per day.

**ACCESSIBILITY** All restrooms are ADA compliant. All levels have elevators. Gallery glass doors open automatically. Areas of Refuge are located on Levels L and 1. See map for locations.

COVER Details from works of art in the Virginia Museum of Fine Arts collection.  
© 2015 Virginia Museum of Fine Arts Aug (7616-130)

#### LEVEL 3

##### MUSEUM COLLECTIONS

American  
Art Deco  
Art Nouveau  
European  
South Asian  
Photography

##### Amuse Restaurant

Claiborne Robertson Room

#### LEVEL 2

##### MUSEUM COLLECTIONS

American  
Ancient  
East Asian  
European  
English Silver  
Fabergé (*Closed during Renovation*)  
British Sporting  
Native American  
Pre-Columbian  
African  
Mid to Late 20th Century  
21st Century

##### Marble Hall

##### Tapestry Hall

##### Evans Court

#### LEVEL 1

##### Visitor Services Desk

##### Member Services Desk

##### Best Café

##### Shop

##### Library

##### MUSEUM COLLECTION

European  
Art Education Center  
Teaching Gallery  
Theater access (*Elevator in Gallery*)

#### LEVEL L

##### Leslie Cheek Theater

##### Conference Suite *Area of Refuge*

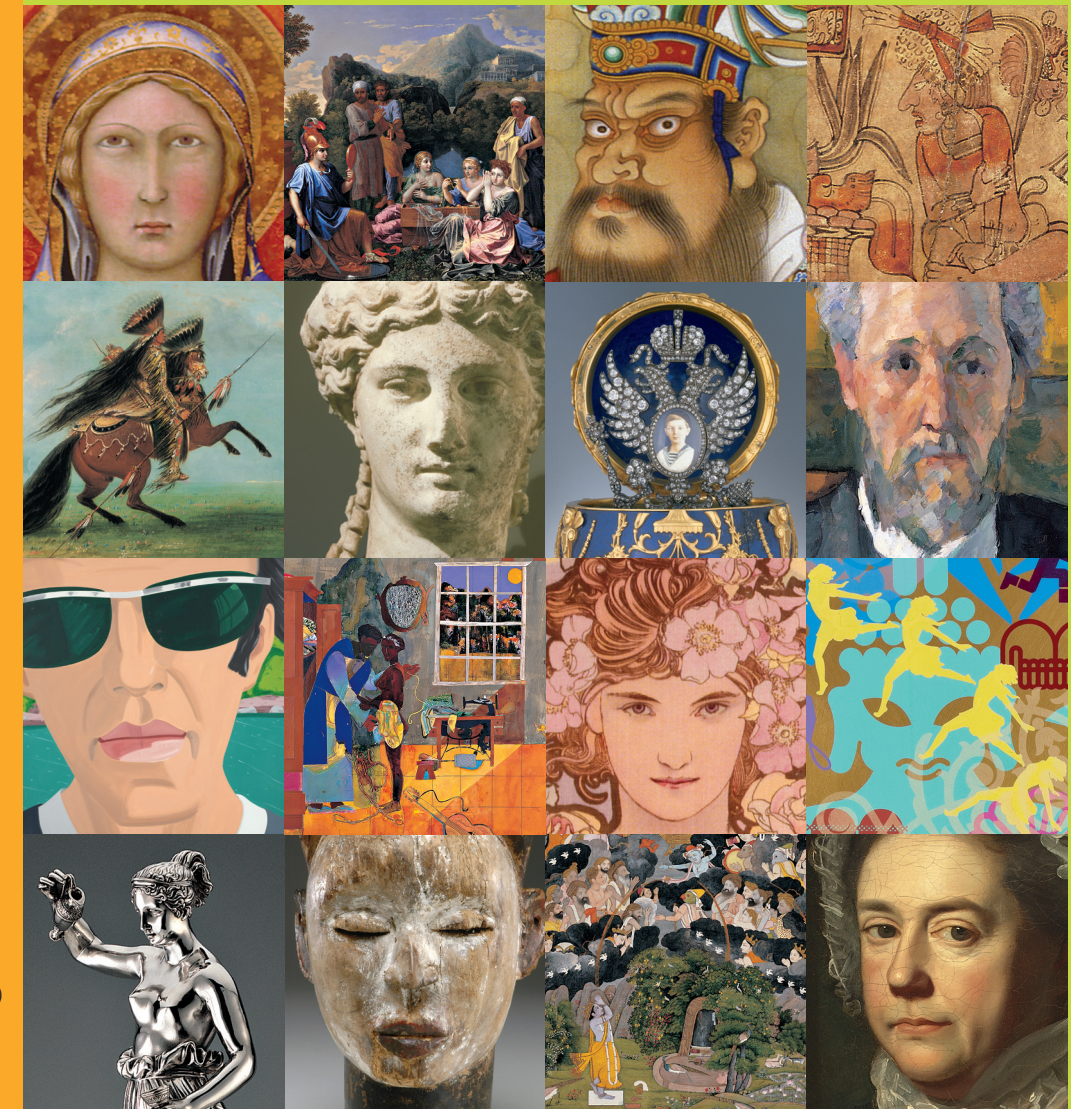
#### LEVEL LL

##### SPECIAL EXHIBITIONS GALLERIES

Altria Group & NewMarket Galleries  
Reynolds Lecture Hall

# Gallery Map

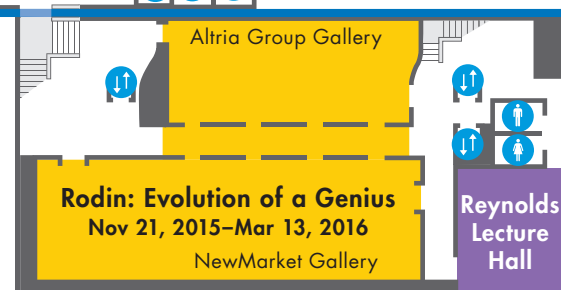
VIRGINIA MUSEUM OF FINE ARTS | 2015–16



LEVEL



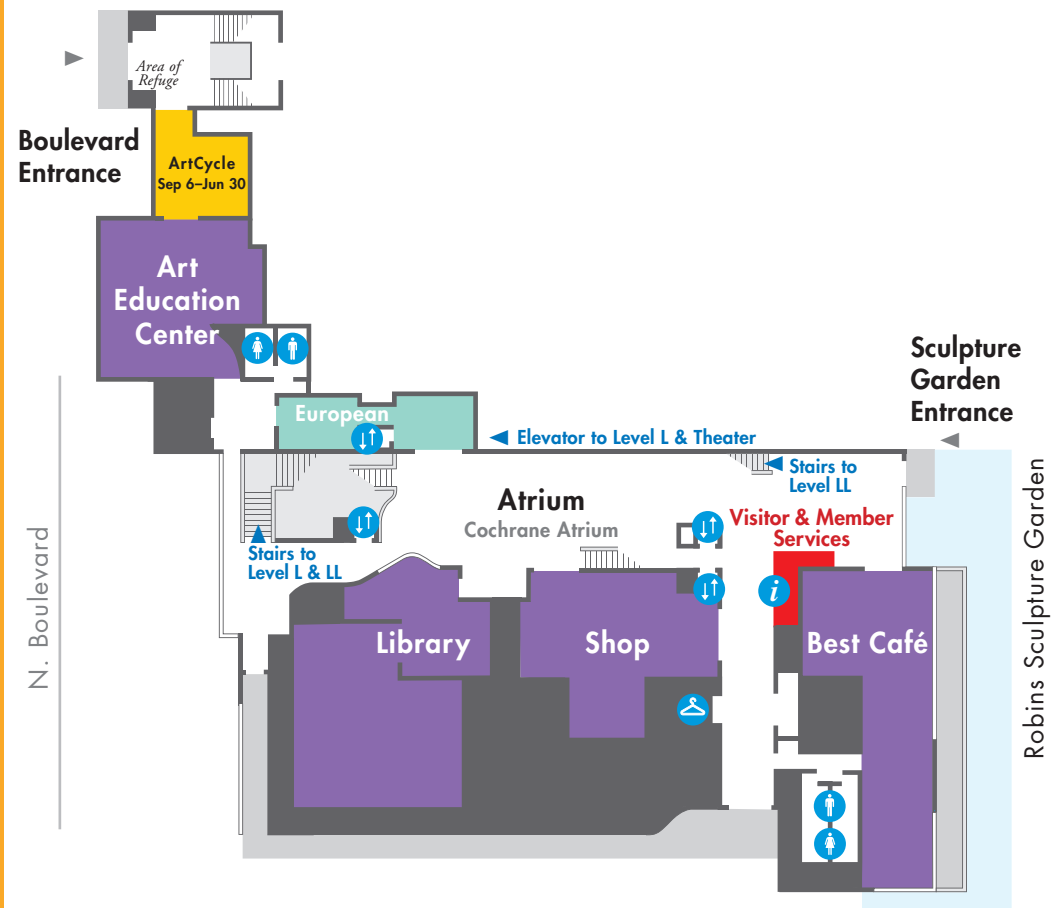
LEVEL



VIRGINIA MUSEUM OF FINE ARTS  
200 N. Boulevard | Richmond, VA 23220



# Welcome



▲ Group Entrance

▲ Main Entrance  
McGlothlin Wing

## COLLECTIONS

European German Expressionism | French Modernism

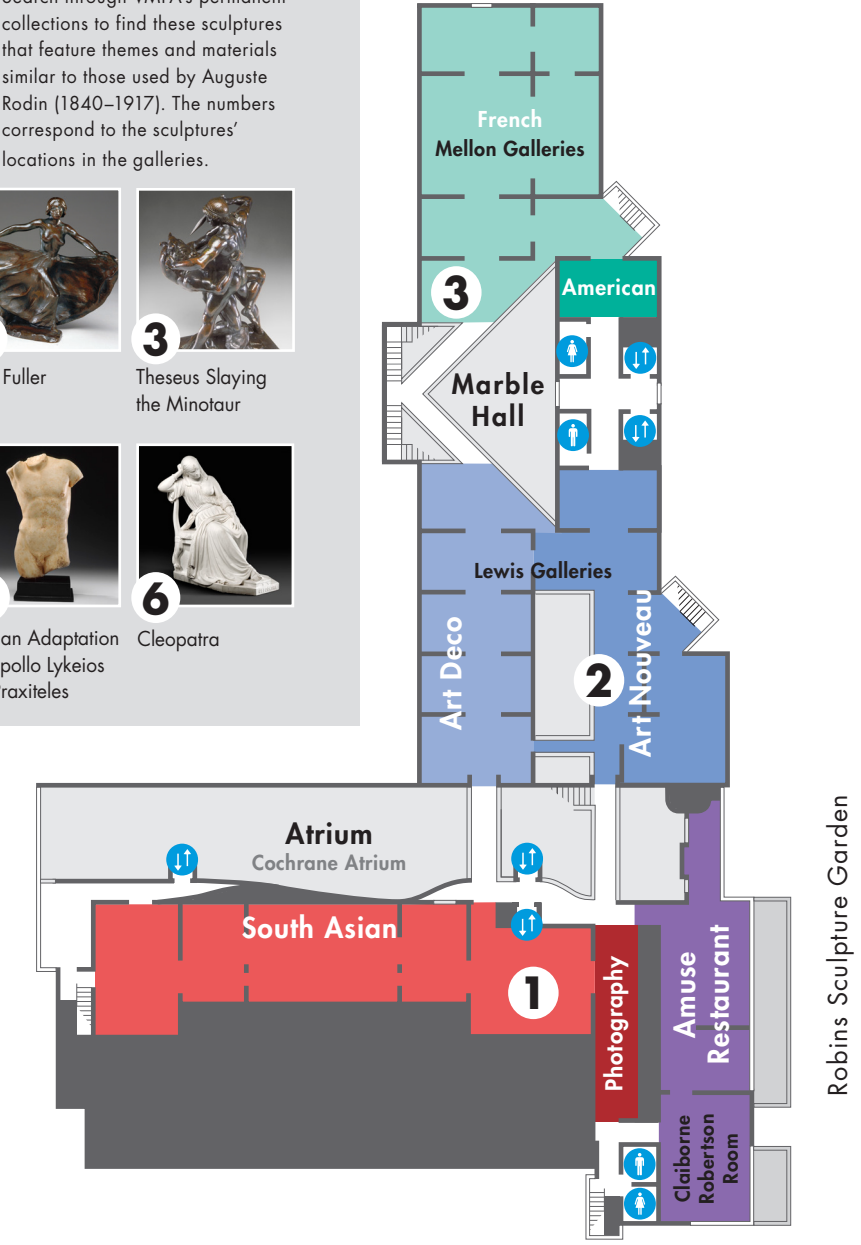


## COLLECTIONS

- Mid to Late 20th Century
- 21st Century
- African
- American
- Ancient Egyptian | Greek | Roman | Etrurian
- East Asian Chinese | Japanese | Korean
- European Byzantine | Medieval | Renaissance Baroque | 18th Century | 19th Century English Silver | Fabergé | British Sporting
- Pre-Columbian | Native American

**RELEVANT TO RODIN**

Search through VMFA's permanent collections to find these sculptures that feature themes and materials similar to those used by Auguste Rodin (1840–1917). The numbers correspond to the sculptures' locations in the galleries.



## COLLECTIONS

- American
- European French | French Impressionism
- Art Deco
- Art Nouveau
- South Asian Indian | Nepalese | Tibetan
- Photography