



YVES
THE PERFECTION OF STYLE **SAINT**
LAURENT

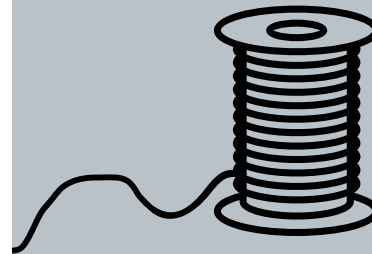
Style Inspirations Sketchbook



Perfect your own style!



VMFA Galleries



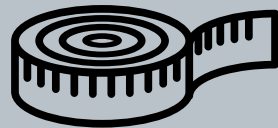
Designer Yves Saint Laurent was influenced by art of all styles and periods. He admired contemporary artists, found ideas from art history books, and collected all types of art. He drew from these influences to perfect his own designs.

Use this guide and map to the left to find works of art in VMFA's galleries that closely mirror six ensembles from Saint Laurent's career. Sketch your own designs inspired by works of art in the galleries, using the "swatches" and "collection boards" to experiment with color and texture.



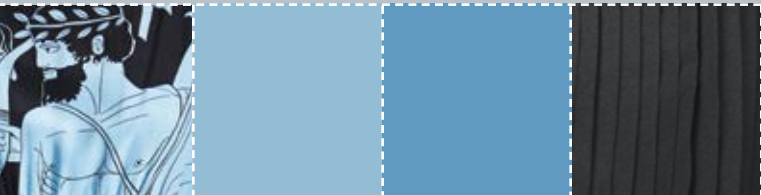
If you like this evening gown . . .

visit the Ancient Art Galleries on level 2.



Evening Gown, Spring–
Summer 1971 haute couture
collection

Swatches



Swatches

1

Red-Figure Pelike (storage vessel), Greek, attributed to Eucharides Painter, 480 BC. 62.1.13

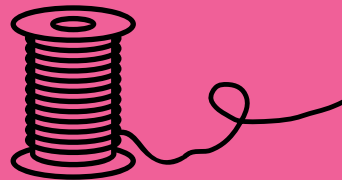
Look closely at the pleating of the dresses on this vessel. This ancient Greek dress is called a peplos. The Saint Laurent evening gown from 1971 replicates these pleats, while the fabric pattern recalls the black-outlined figures of the vase painting. **Do you think you could move like the dancer on this vase if you were wearing Saint Laurent's gown?**

If you like this outfit . . .

visit the African Art Galleries on level 2.



This ensemble is part of Saint Laurent's 1967 clothing line called "Bambara," a now-outdated name for the Bamana people of West Africa, which includes the country of Mali.



Short Evening Ensemble,
Spring–Summer 1967 haute
couture collection



2

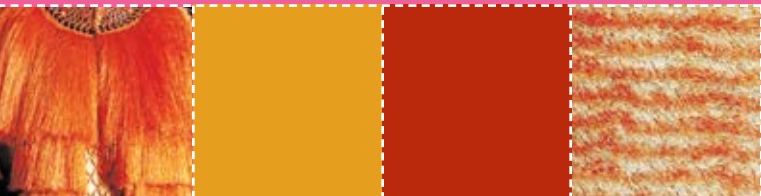
Chi Wara Headdress, early
20th century, Bamana
culture (Mali). 77.93

This Chi Wara headdress made by a Bamana artisan would have originally had raffia hanging from the base, covering the body of the dancer. **How is the headdress in Saint Laurent's creation similar to the West African one?**



Swatches

Swatches

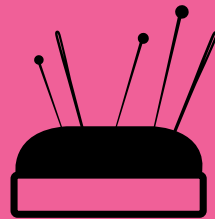


If you like this ensemble . . .

visit the Fabergé Galleries on Level 2.



The Ballets Russes was a dance company formed in Paris that operated from 1909 to 1929. They experimented with movement, costuming, and set design, drawing upon traditional Russian style. The troupe revolutionized modern dance and remains highly influential today.



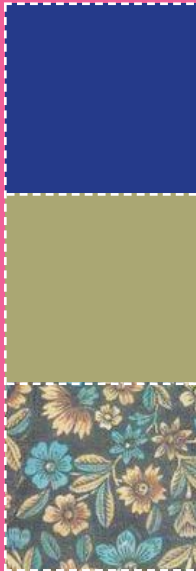
Evening Ensemble, Autumn–
Winter 1976 haute couture
Opera-Ballets Russes Collection



3

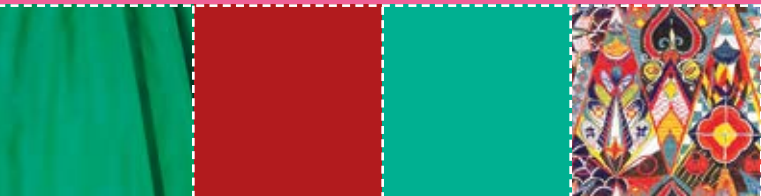
Enamel Pictorial Box, 1908–17,
Fabergé firm, Russian. 98.14

The scene on this box illustrates the Russian fairytale Ivan and the Grey Wolf. This story inspired composer Igor Stravinsky's *The Firebird*, the 1910 Paris premiere production of Ballets Russes. **What color and pattern similarities do you notice in this box and Saint Laurent's Ballets Russes inspired creation?**



Swatches

Swatches



Be Inspired!

Sketch your design for a piece of clothing on this dress form.



Collection Board

When you get home, cut out swatches from this sketchbook. Use a glue stick to "pin" them to this collection board, just like Yves Saint Laurent did.



SOIR collection board (detail). Spring-Summer 1971
haute couture collection

Is this an haute couture (one-of-a-kind, custom-made) or a prêt-à-porter (ready-to-wear for the general public) article of clothing?

If you like this gown . . .

visit the Mid to Late 20th Century Galleries on level 2.



In 1966, *Life* magazine called this gown "Saint Laurent's pop-art version of how to dress for dinner." He was the first fashion designer to incorporate images from this modern art movement.



Evening Gown, Homage to Tom Wesselmann, Autumn–Winter 1966 haute couture collection



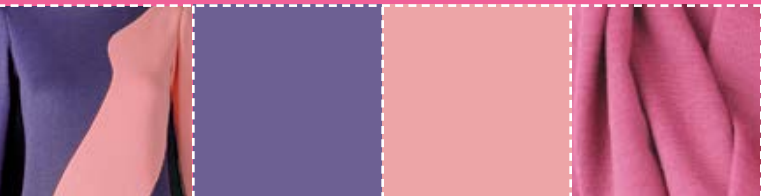
Swatches

4

Great American Nude #35, 1962, Tom Wesselmann, American. 85.454 Art © Estate of Tom Wesselmann/ Licensed by VAGA, New York, NY

Pop artists, such as Tom Wesselmann, found inspiration for their boldly colored imagery in advertising, comic books, and ordinary mass-produced objects. **What has Yves Saint Laurent borrowed from Wesselmann's style in his version of pop art?**

Swatches

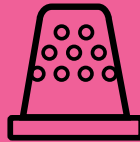


If you like this dress. . .

visit the French Galleries on level 3.



Yves Saint Laurent was the first designer to feature models of color in his runway shows. As Mounia, a model from Martinique, recounted, "He helped open the door to black models."



Short Evening Ensemble worn by Sonia. Homage to Georges Braque. Spring–Summer 1988 haute couture collection. Hôtel Inter-Continental, Paris. Photograph by Guy Marineau



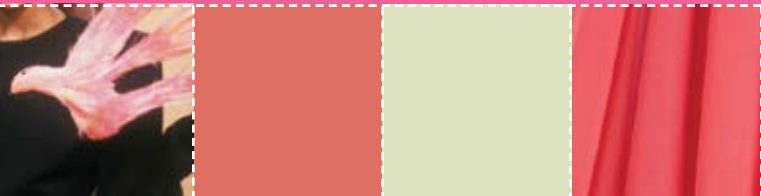
5

Fruit Dish and Fruit Basket, 1928, Georges Braque, French. 83.11 © 2017 Artists Rights Society (ARS), New York / ADAGP, Paris

The birds on the front of the Saint Laurent dress are a nod to artist Georges Braque's use of stylized birds in paintings and prints after World War II. This still life, painted earlier in Braque's career, also has stylized forms. **What kinds of objects can you find?**

Swatches

Swatches



If you like this dress. . .

visit the Lewis Decorative Arts Galleries on level 3.



One of the most iconic of Saint Laurent's designs, this dress is an ode to early 20th-century artist Piet Mondrian's signature geometric compositions in red, yellow, blue, black, and white.



Cocktail dress, Homage to Piet Mondrian, Autumn–Winter 1965 haute couture collection



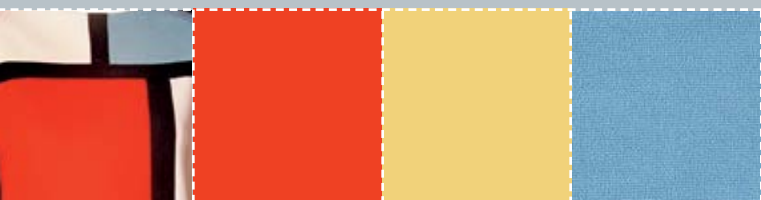
6

Suite of Furniture, 1926, Félix Del Marle, French. 85.101

Félix Del Marle was part of a Dutch art movement called De Stijl, or "The Style," co-founded by Piet Mondrian. De Stijl artists emphasized the use of primary colors, straight lines, rectangles, and squares. Del Marle made this suite of furniture for his own home. **Imagine someone wearing the Yves Saint Laurent dress walking into a room with this furniture. Which piece would they choose to sit on?**

Swatches

Swatches



Be Inspired!

Sketch your design for a piece of clothing on this dress form.



Collection Board

When you get home, cut out swatches from this sketchbook. Use a glue stick to "pin" them to this collection board, just like Yves Saint Laurent did.



SOIR collection board (detail). Spring-Summer 1971
haute couture collection

Describe the type of person who would wear your design. What would he or she do for a living? Where would he or she wear this outfit?

Yves Saint Laurent: The Perfection of Style is organized by the Seattle Art Museum in partnership with the Fondation Pierre Bergé – Yves Saint Laurent, Paris.



Fondation
PIERRE BERGÉ
YVES SAINT LAURENT

For more activities, visit www.VMFA.museum/learn.

© 2017 Virginia Museum of Fine Arts Apr (7995-162)



VMFA
VIRGINIA MUSEUM OF FINE ARTS

