

## Water and Shadow: Kawase Hasui and Japanese Landscape Prints

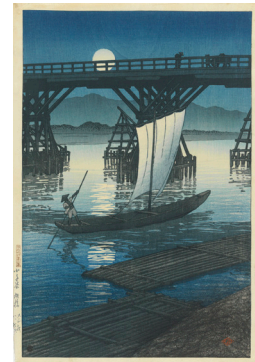
November 15, 2014 – March 29, 2015



Kawase Hasui (Japanese, 1883-1957), *Fine Winter's Sky, Miyajima* from the series *Souvenirs of Travel*, Second Series, February 17, 1921, color woodblock print, ink and color on paper. Virginia Museum of Fine Arts, Richmond. René and Carolyn Balcer Collection. Photo: Travis Fullerton © Virginia Museum of Fine Arts



Kawase Hasui (Japanese, 1883-1957) *Coastal Landscape*, summer 1927, two-panel screen painting, ink and color on paper. René and Carolyn Balcer Collection. Photo: John Bigelow Taylor



Kawase Hasui (Japanese, 1883-1957), *Asabi Bridge, Ojiya*, from the series *Souvenirs of Travel*, Second Series, August 14, 1921, woodblock print, ink and color on paper. Virginia Museum of Fine Arts, Richmond. René and Carolyn Balcer Collection. Photo: Travis Fullerton © Virginia Museum of Fine Arts



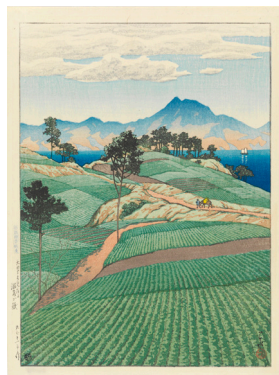
Kawase Hasui (Japanese, 1883-1957) *Lake Tonada*, c.1919, two-panel screen painting, ink and color on paper. Dr. John Weber Collection. Photo: John Bigelow Taylor



Kawase Hasui (Japanese, 1883-1957), *Kaminobashi Bridge, Fukuagawa*, from the series *Twelve Subjects of Tokyo*, summer 1920, woodblock print, ink and color on paper. Virginia Museum of Fine Arts, Richmond. René and Carolyn Balcer Collection. Photo: Travis Fullerton © Virginia Museum of Fine Arts



Kawase Hasui (Japanese, 1883-1957) *Singing Lesson*, c. 1915, two-panel screen painting, ink and color on paper. René and Carolyn Balcer Collection. Photo: John Bigelow Taylor



Kawase Hasui (Japanese, 1883-1957), *Mt. Unzen Seen from Amakusa*, from the series *Selections of Scenes of Japan*, 1922, woodblock print, ink and color on paper. Virginia Museum of Fine Arts, Richmond. René and Carolyn Balcer Collection. Photo: Travis Fullerton © Virginia Museum of Fine Arts



Kawase Hasui (Japanese, 1883-1957) *Hori River, Obama* from the series *Souvenirs of Travel, First Series*, early autumn 1920, woodblock print, ink and color on paper. Virginia Museum of Fine Arts, Richmond. René and Carolyn Balcer Collection © Virginia Museum of Fine Arts



Kawase Hasui (Japanese, 1883-1957), *Daigokuden, Kyoto*, from the series *Selection of Scenes of Japan*, 1922, woodblock print, ink and color on paper. Virginia Museum of Fine Arts, Richmond. René and Carolyn Balcer Collection. Photo: Travis Fullerton © Virginia Museum of Fine Arts