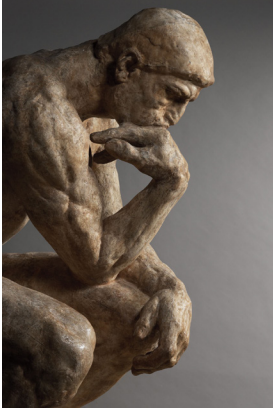


Rodin: Evolution of a Genius
November 21, 2015 - March 13, 2016



Auguste Rodin, *The Thinker* (large-size model), 1903, patinated plaster. © Musée Rodin (photo: Christian Baraja)



Auguste Rodin, *The Sirens*, ca. 1887-1888, marble, Montreal Museum of Fine Arts, gift of the Huntly Redpath Drummond family.



Auguste Rodin, *The Kiss* (reduction no. 1), 1898, bronze, Barbedienne foundry. © Musée Rodin (photo: Christian Baraja)



Auguste Rodin, *Molding of Auguste Rodin's hand holding a torso*, 1917, plaster. © Musée Rodin (photo: Christian Baraja)



Auguste Rodin, *Three Shades* (small-size model), patinated plaster. © Musée Rodin (photo: Christian Baraja)



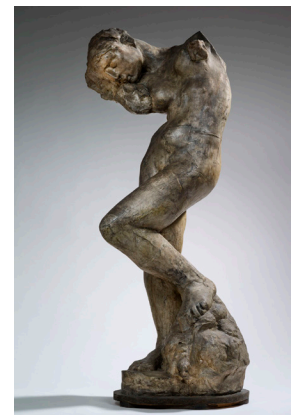
Auguste Rodin, *Small Water Fairy* (model), ca. 1903, plaster and terracotta. © Musée Rodin (photo: Christian Baraja)



Auguste Rodin, *Assemblage: Torso of the Centauress and Despairing Adolescent*, about 1890, plaster. © Musée Rodin (photo: Christian Baraja)



Auguste Rodin, *The Minotaur*, 1885-1886, plaster. © Musée Rodin (photo: Christian Baraja)



Auguste Rodin, *Armless Meditation*, about 1894-1896, patinated plaster. © Musée Rodin (photo: Christian Baraja)