

Statewide Traveling Exhibitions

VMFA creates exceptional experiences of art and culture through exhibitions and programs designed for all Virginians. These exhibitions are offered exclusively to VMFA Museum Partners. For more information contact Jeffrey Allison, Paul Mellon Educator and Statewide Programs Coordinator, 804.204.2671, jeffrey.allison@VMFA.museum, or Shannon Petska, Traveling Exhibitions Coordinator, 804.340.1650, shannon.petska@vmfa.museum.

EXHIBITIONS AVAILABLE FOR TOUR

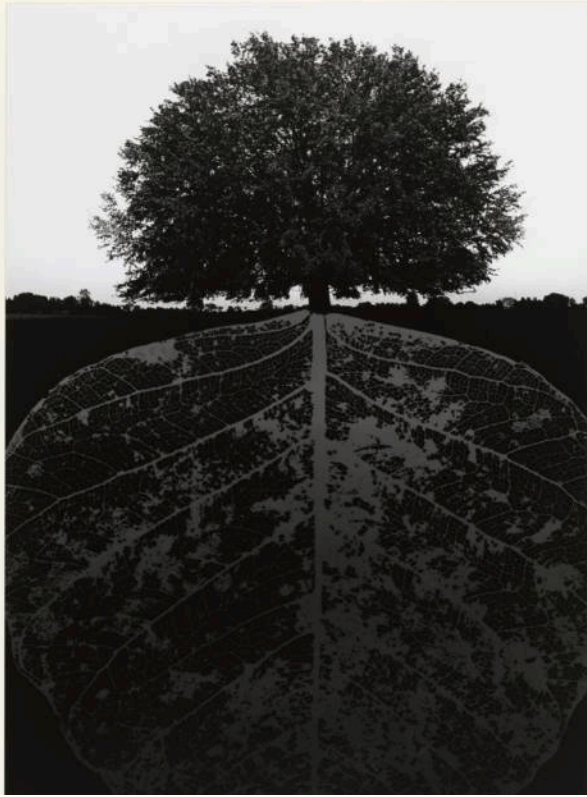


Thomas R. Schiff: Virginia 360

Noted American contemporary photographer Thomas R. Schiff uses a panoramic camera to create dynamic and startlingly original images of well-known buildings and familiar sites. “I always like to go to places people are familiar with and show the perspective from a panoramic camera,” he says. “The camera distorts everything in the picture—straight lines become curved and it throws off your perspective. It challenges your relationship to what is familiar or thought to be understood.”

This exhibition presents 40 photographs that Schiff made in the commonwealth of Virginia between 2004 and 2013—all of which were included in the 2015 publication *Virginia 360°: Photographs by Thomas Schiff*. Combining Schiff’s passion for photography and his love of architecture, the works in this exhibition provide a fresh, new perspective of such notable Virginia landmarks as Monticello, the Governor’s Palace in Williamsburg, and the Rotunda at the University of Virginia, encouraging the viewer to reevaluate their perceptions of the world.

Governor’s Palace, Colonial Williamsburg, 2010, Thomas R. Schiff (American, born 1947), chromogenic print. Collection of the artist



Organic: Photographs of the Natural World

From scientific to symbolic, images of nature have played an integral role in the history of photography. This exhibition of 18 photographs offers diverse perspectives, ranging from sincere attempts to convey the beauty and wonder of the natural world to critical commentaries on the tension between humankind and nature. Photographers represented in the exhibition include Ansel Adams, Imogen Cunningham, Lee Friedlander, Hullihen Williams Moore, Willie Anne Wright, and others.

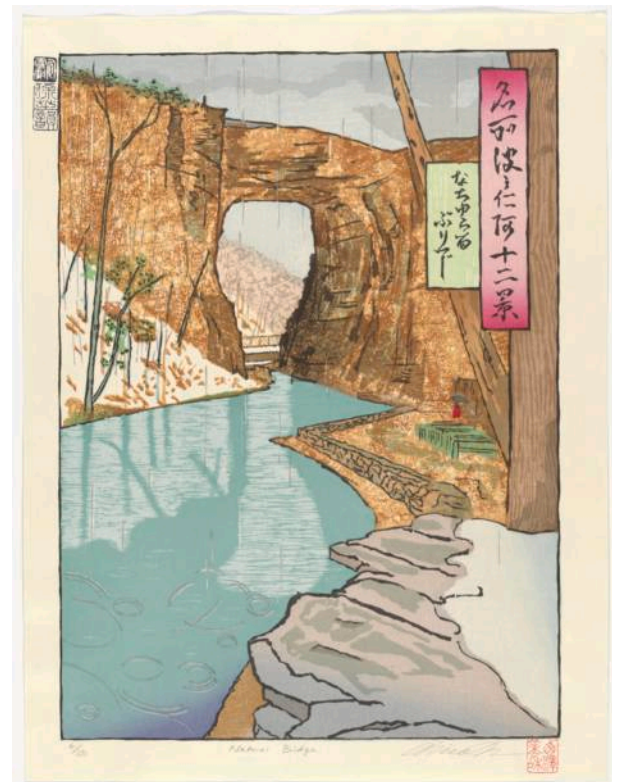
Untitled, 1964, Jerry N. Uelsmann, (American, born 1934), Adolph D. and Wilkins C. Williams Fund

Statewide

Miwako Nishizawa: Twelve Views of Virginia

Miwako Nishizawa is a California-based Japanese-American artist specializing in the traditional shin-hanga woodblock technique that revitalized the ukiyo-e tradition in early 20th-century Japan. As part of their interest in shin-hanga prints by Kawase Hasui, collectors René and Carolyn Balcer commissioned Nishizawa to execute *Twelve Views of Virginia* in the shin-hanga style. Scenic views of Colonial Williamsburg, Monticello, Cape Henry, Natural Bridge, and the Blue Ridge Mountains are included, as well as other places of historic significance and natural beauty in the commonwealth.

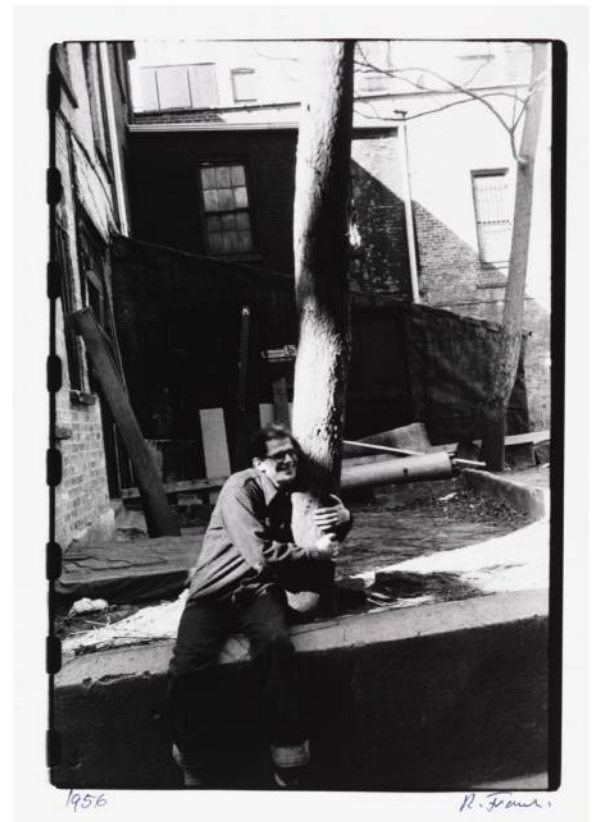
Natural Bridge, 2013, Miwako Nishizawa (Japanese-American, born 1964), woodblock print. René and Carolyn Balcer Collection



Artists as Art: Photographic Portraits

This exhibition features 24 photographic portraits of 20th century-artists, writers, and performers including Alfred Steigletz, Alan Ginsburg, Martha Graham, among others. These images convey more than a mere likeness of the artists portrayed. They also highlight the collaboration between photographer and subject when both are artists seeking to convey a unique persona.

Allen Ginsberg, 1959, Robert Frank (American, born 1924), gelatin silver print.
Aldine S. Hartman Endowment Fund



Traveling Exhibitions

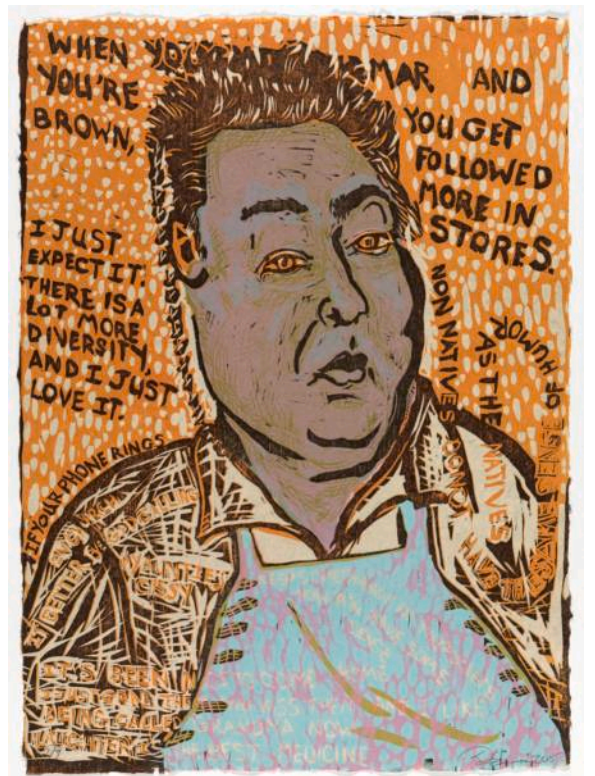
UPCOMING EXHIBITIONS AVAILABLE FOR TOUR

In Our Own Words: Native Impressions

Available May 2018

Artists Daniel Heyman and Lucy Ganje began this project by recording the oral histories of men and women from the four tribal nations remaining in North Dakota. Speaking to a variety of members of these communities, Heyman and Ganje heard stories of individual histories that dealt with displacement and assimilation into the dominant western European culture.

The result of these interviews is *In Our Own Words: Native Impressions*. The 26 woodcut prints include a portrait in the center of one page, augmented by printed text in a variety of styles, sizes, colors, and languages on an adjacent broadside. The format itself is reminiscent of 19th-century “wanted” posters or public proclamations, which hearken back to a time when the ancestors of these individuals were being physically displaced and exterminated through government-sanctioned actions. The significance of both spoken and written language is acknowledged, as is the importance of showing the individual as a dignified, aware, and proud carrier of his or her culture.



Geraldine “Cissy” Dunn, Standing Rock Nation, *If Your Telephone Rings*, 2014–15, Daniel Heyman (American, born 1963). Arthur and Margaret Glasgow Endowment



At the Bodinière, 1894
Théophile-Alexandre Steinlen (French, born Switzerland, 1859–1923), lithograph printed in black and orange inks on wove paper. The Maxine Hornung Collection, Gift of Frank Raysor

Steinlen: Cats

Available June 2018

This feline-themed exhibition of 26 works, comprising both highly stylized as well as tender, realistic images, aims to revive the understanding of and appreciation for multifaceted artist Théophile-Alexandre Steinlen's uncanny eye and sinuous line. Though this exhibition focuses exclusively on Steinlen's images of cats, it also explores his artistic growth as he experimented with a range of styles, such as Realism, *Japonisme*, Art Nouveau, and Post-Impressionism, over the course of his career.

Steinlen: Cats was conceived and developed with the University of Richmond's exhibition *Steinlen: Humanity*, which examines the artist's humanitarian, social, and political themes. Both exhibitions are available for statewide travel.



VIRGINIA MUSEUM OF FINE ARTS

200 N. Boulevard | Richmond, VA 23220 | www.VMFA.museum