

## Visitor Policies

**ART SAFETY** Please do not touch the art. Maintain a reasonable distance from art displayed in the galleries, the Sculpture Garden, and other areas. When sketching or writing in the galleries, use pencil only.

**YOUR BELONGINGS** Umbrellas and items larger than 8 x 13 x 16 inches must be left at Coat Check where they will be safely stored at no charge. Nothing may be carried on your back in the galleries.

**PHOTOS & VIDEO** Snap pics and video for personal use only. Flash photography, tripods, and selfie-sticks are not allowed.

**FOOD & DRINKS** Enjoy food and beverages in designated spaces only. Please do not bring food, beverages, candy, or gum into the galleries.

**FAMILY CARE** Children under 13 must be accompanied by an adult. Strollers are welcome and can be borrowed from Coat Check. A Mother's Lounge is located near the Interactive Gallery.

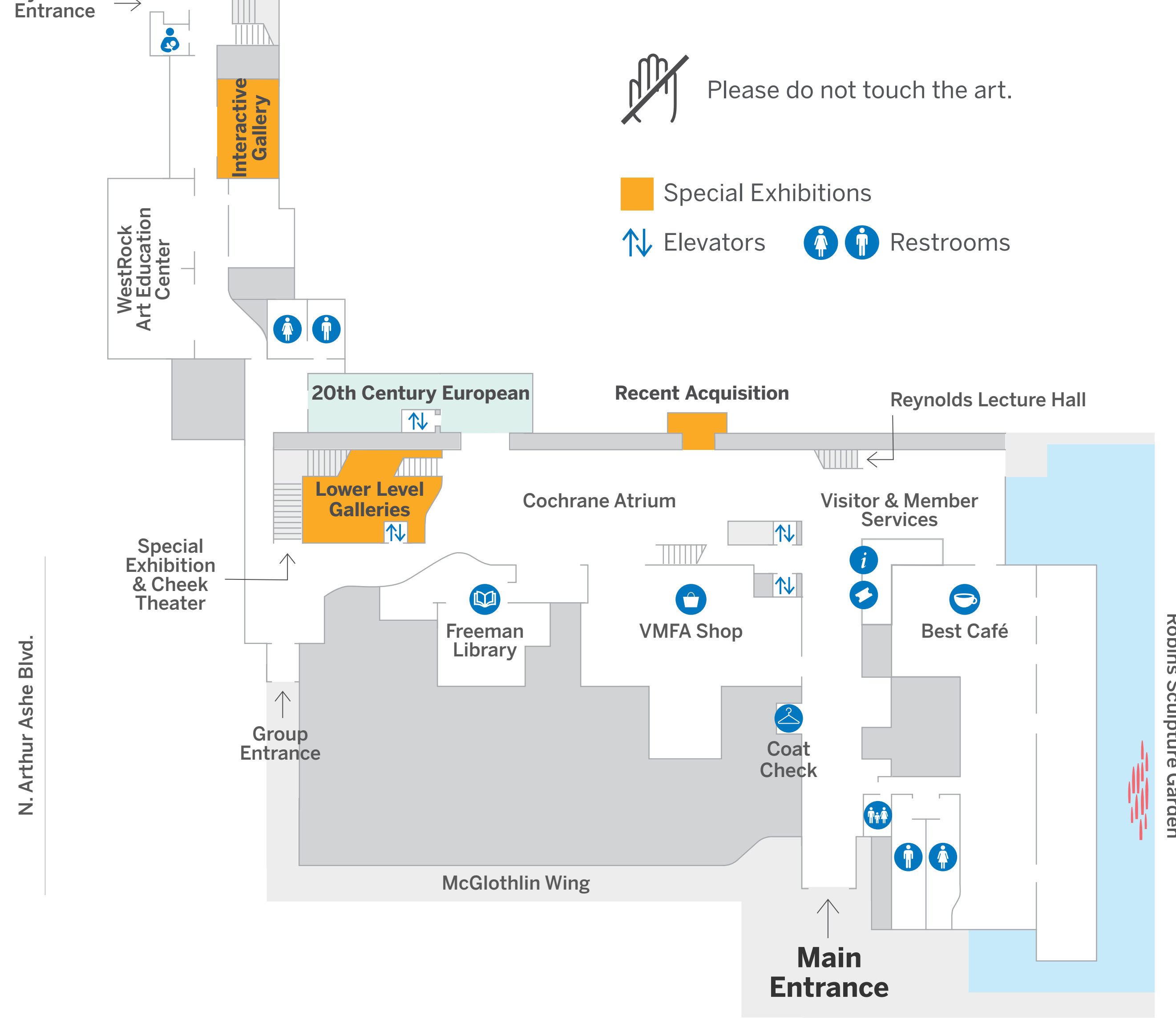
**ACCESSIBILITY** Wheelchairs and motorized scooters are available at Coat Check. All levels are accessible by elevator, and seating is provided throughout the museum. To inquire about additional resources, stop by the Visitor Services Desk.

**VALUES** The museum values civility, diversity, inclusion, and equity, ensuring a safe and welcoming environment for all. Harassing, discriminatory, or threatening behavior is strictly prohibited.

**GUIDES, RESOURCES & TOURS** Stop by the Visitor Services Desk to inquire about tours and audio guides. Visit us online for audio tours and other resources you can access on your mobile device.

For a complete list of visitor policies, visit [www.VMFA.museum/visit/plan-ahead](http://www.VMFA.museum/visit/plan-ahead)

## Level 1



## Level 2



### AUDIO TOUR

"Beyond the Label!" is an audio tour to get you started with several VMFA favorites. Available in English and Spanish.



1 Catfish Row



2 Wall Drawing #541



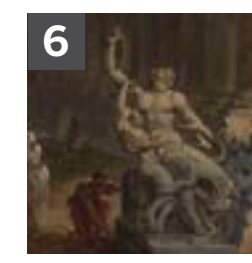
3 Field of Poppies



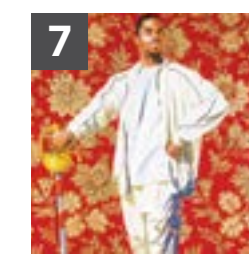
4 Tsarevich Egg



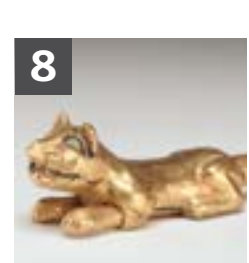
5 Septimius Severus



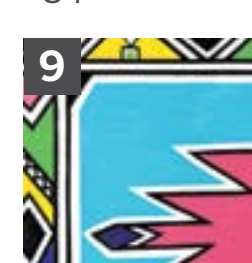
6 Finding of the Laocoön



7 Willem van Heythuysen



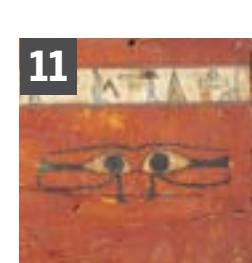
8 Jaguar



9 Ndebele Design



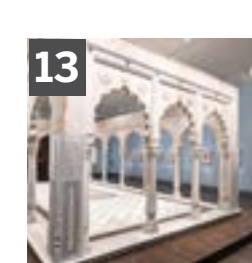
10 Butterfly Whorl



11 Tjeby (mummy)



12 Bactrian Camel



13 Garden Pavilion



14 Tiffany Punch Bowl



## Level 3



## Hours & Services

### OPEN 365

Daily 10 am–5 pm\*  
Wed, Thu & Fri until 9 pm  
\*Including Thanksgiving, Christmas Eve, Christmas Day, New Year's Eve, and New Year's Day

### PARKING DECK

Daily fee \$6  
(free for VMFA members)  
Daily 9 am–7 pm  
Wed, Thu & Fri until 10 pm

### VMFA SHOP

Daily 10 am–5 pm  
Wed, Thu & Fri until 9 pm  
[www.vmfashop.com](http://www.vmfashop.com)

### BEST CAFÉ

Daily 10 am–4:30 pm  
Wed, Thu & Fri until 8:30 pm

### AMUSE RESTAURANT

Daily 11:30 am–4:30 pm  
Wed, Thu & Fri until 8:30 pm

### FLORIS AT VMFA

Sat–Wed 11:30 am–4:30 pm  
(last seating 2:30 pm)

### LIBRARY

Mon–Fri 11 am–5 pm

## Stay Connected

[Subscribe](#) to our emails.

Become a [VMFA member](#).

Learn more at [www.VMFA.museum](http://www.VMFA.museum).

## Follow Us

@vmfamuseum

